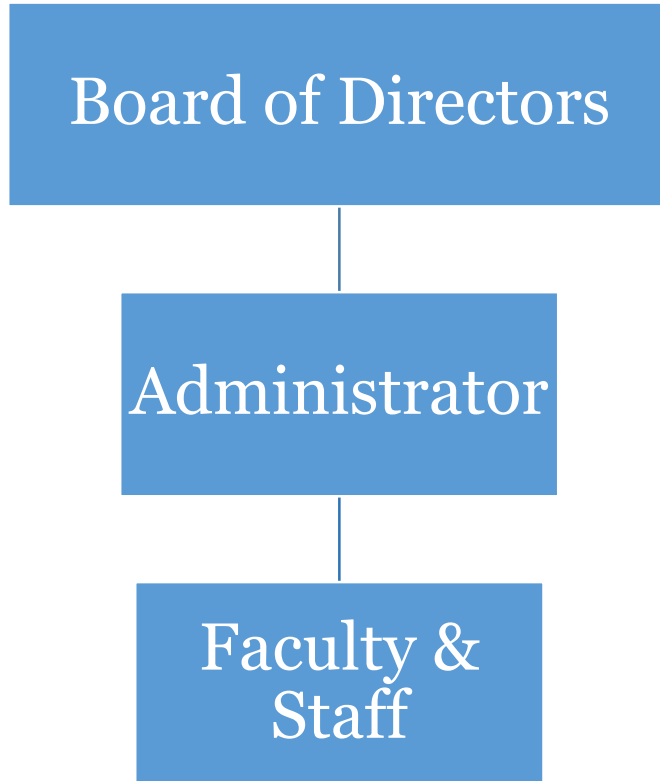




Community Christian School of Baraboo Organizational Chart



Roles and Responsibilities

Board

- casts vision and mission of school
- sets policy and acts in advisory role to administration
- determines business structure and functions
- ensures legal compliance
- directs finances

Administrator

- implements board policies
- determines procedures that align with and fulfill board policies
- ensures business functions are fulfilled
- responsible for academic and extra-curricular programs
- oversees day-to-day functioning of school
- management of faculty and staff

Board Committees

- Audit
- Capital Finance
- Curriculum
- Executive
- Facilities
- Fundraising
- Outreach
- Parent
- Personnel
- Safety
- Scholarship