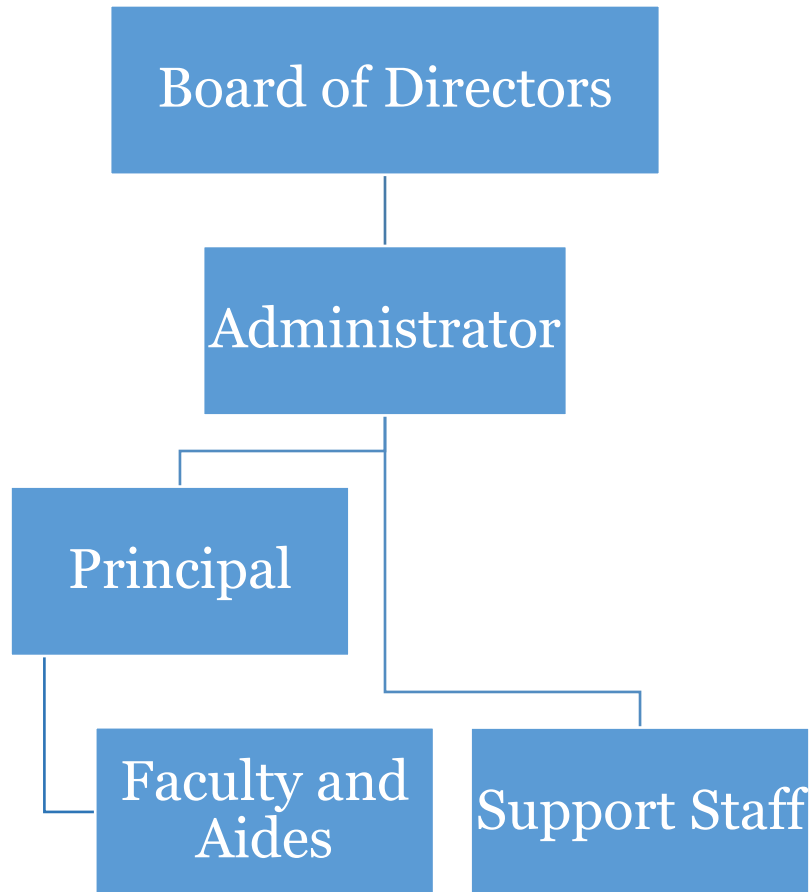




Community Christian School of Baraboo Organizational Chart



Roles and Responsibilities

Board of Directors

- casts vision and mission of school
- determines business structure and functions
- sets policy and advises administration
- supervision of administrator
- final court of appeals

Administrator

- implements board policies
- determines procedures that fulfill board policies
- legal and regulatory compliance
- directs finances
- ensures business functions are fulfilled
- supervision of principal and support staff

Principal

- responsible for academic and extra-curricular programs
- oversees day-to-day functioning of school
- supervision of faculty and classroom aides
- serves as “dean of students”